

# DELTA

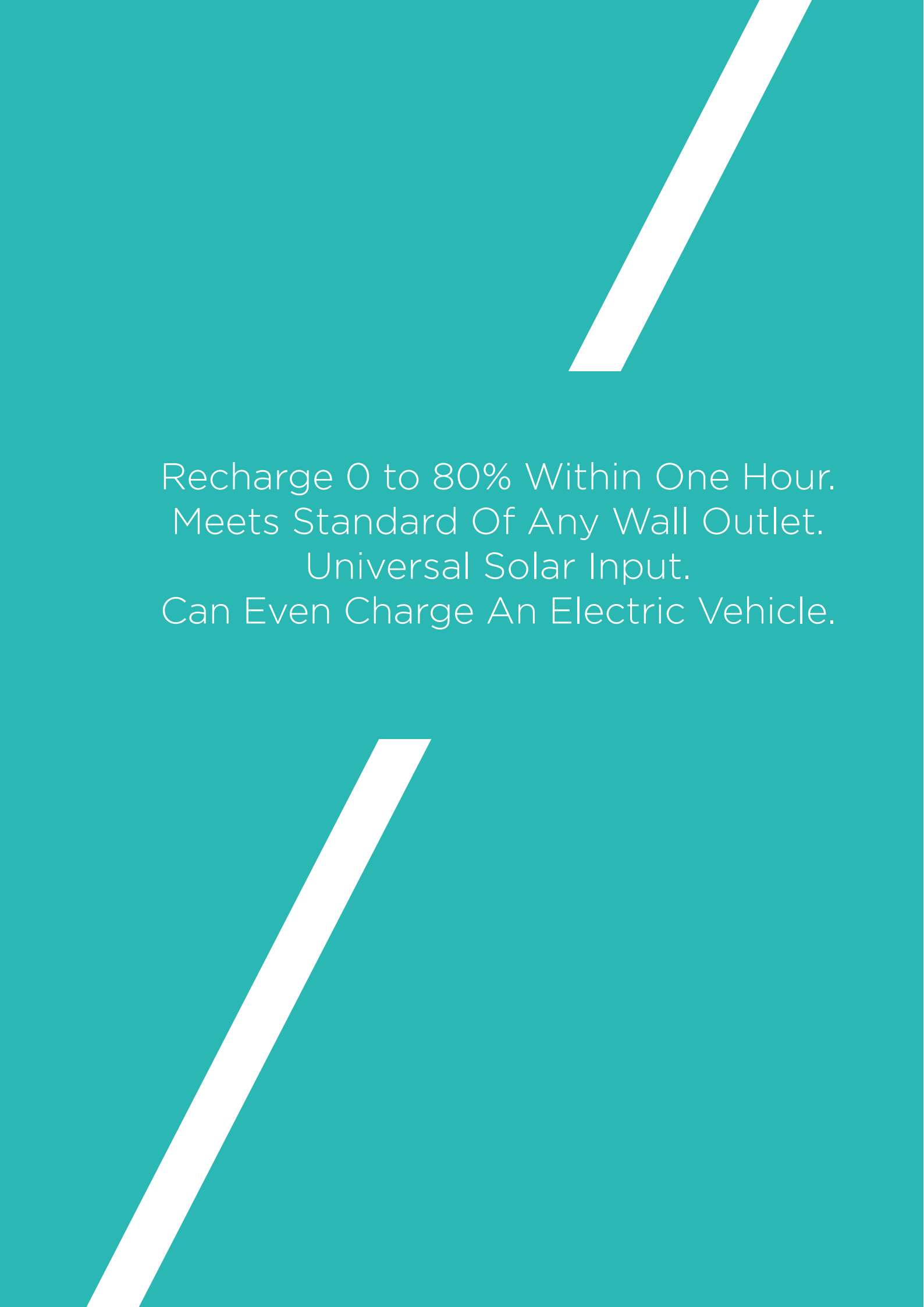
**The Strongest Battery Generator**



# DELTA

---

The New Standard Of  
Battery-Powered Generator



Recharge 0 to 80% Within One Hour.  
Meets Standard Of Any Wall Outlet.  
Universal Solar Input.  
Can Even Charge An Electric Vehicle.

# The Problems of **Gasoline Generators**



“Stale fuel is the No.1 cause of generator starting problems. Manufacturers advise adding fuel stabilizer to the gas to minimize fuel breakdown, varnish and gum buildup.”

————— Family-Handyman

“Carbon monoxide poisoning sends more than 20,000 people to the emergency room each year.”

————— Institute of Standards and Technology

# Why You Need A Battery Powered Generator

## Lightweight & Compact

Compared to gasoline generators, battery generators are more compact and lightweight.

---

## Safely Use indoors

Gasoline generators are loud and emit carbon monoxide, which causes more than 500 deaths annually. During power outages or home recreational activities, you can safely use DELTA indoors.

---

## Save Time & Money

Maintaining a gasoline generator is expensive and time consuming - typically maintained semi-annually at a cost of \$150 per year. Battery-powered generators require no maintenance.





# The New Standard of Battery-Powered Generator

No Gas / No Noise / No Emissions

---



Recharge from 0  
to 80% in 60 min



Lifetime Battery  
Warranty



Up to Six 1800W  
AC Wall Outlets



Universal Solar  
Input



Rigid Structural  
Design

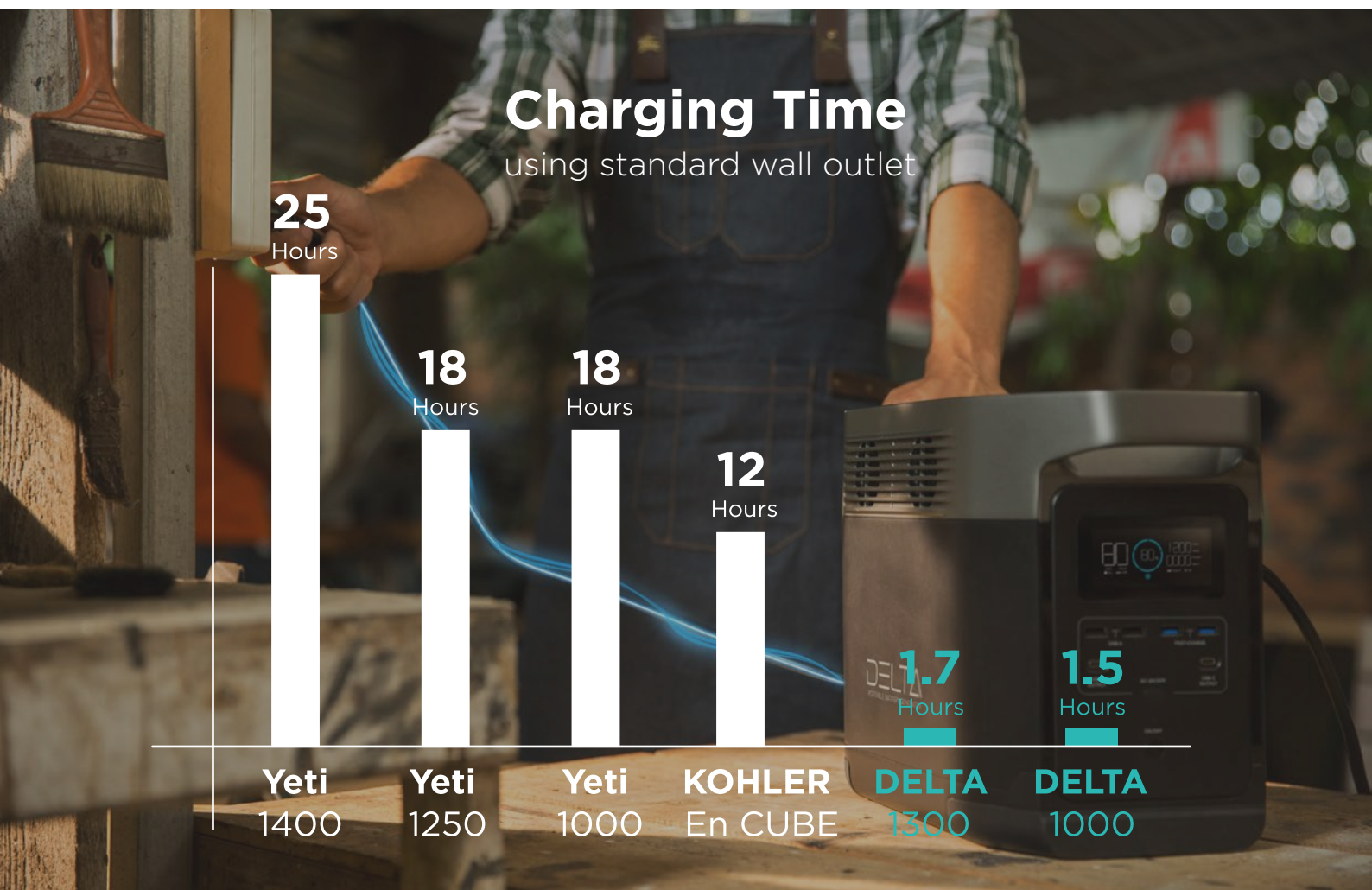


Protective Safety  
Measures

# 1 Hour 0 to 80%

## The Fastest Recharge Rate

For the past two years we've dedicated our time and energy into creating the X-Stream Recharge Technology. This technology provides the fastest recharge rate on the market, working 10x times faster than competing brands of battery-powered generators. This allows DELTA to be fully recharged in under two hours using any regular wall outlet.







# 400W

## Max Solar Input

In perfect sunlight and 400W of solar panels, DELTA can be fully recharged in just four hours.



# 130W

## Max Car Charge Input

DELTA can be fully recharged in just 10 hours.





# Power Your Life



**Phone**

3 Ah

**85+ Times**



**Fruit Squeezer**

150 W

**5.6+ Hours**



**Light**

10W

**36+ Hours**



**Refrigerator or Freezer**

150-1200W

**5.4+ Hours**



**Radio**

5W

**168+ Hours**



**Television Flat Screen (50")**

110W

**15-18+ Hours**



**Sump Pump 1/3 Horsepower**

800-1300W

**1.1+ Hours**



**Garage Door Opener**

720-1420W

**1.2+ Cups**



**Dishwasher (Cool Dry)**

216-540W

**3.7+ Hours**



**Home Printer**

400W

**2+ Hours**



**Toaster**

680-1200W

**1.2+ Hours**



**Coffee Maker (4 cup)**

600W

**50-60 Cups**





**Iron**

800-1200W

1.1+ Hours



**Microwave Oven**

1300W

1-1.8+ Hours



**Electric Fry Pan**

1500W

0.5+ Hours



**Window Air Conditioner**

1500-2200W

0.6-3.3 Hours



**Electric Vehicle(16A)**

1750-1800W

5-8 Km 3-5 Miles



**Fan**

40-120W

20.2+ Hours



**Laptop**

60/150W

23+ Times



**Slow Cooker**

170W

4.8+ Hours



**DJ Player**

350W

2.3+ Hours



**Blender**

400-850W

2+ Hours



**Drone**

60W

16+ Times



**Microwave Oven(650 watts)**

1000W

0.8+ Hours





# Power Your Work



**Drain Cleaner**

250W

**3.2+ Hours**



**Drills 3/8 inch, 4 amps**

900W

**1.3+ Hours**



**High-pressure Washer (1 hp)**

1200-3200W

**4.8+ Hours**



**Concrete Vibrator**

840W

**1+ Hours**



**Air Compressor (1 HP)**

975-1600W

**0.8+ Hours**



**Television Flat Screen**

1100W

**0.7+ Hours**



**Rotary Hammer**

1200W

**0.7+ Hours**



**Demolition Hammer**

1260W

**0.6+ Hours**



**Bench Grinder**

1400-2500W

**0.6+ Hours**



**Circular Saw**

1400-2300W

**0.6+ Hours**



**Split Phase 1/8 Horsepower**

275-1200W

**2.9+ Hours**



**Fan Duty 1/4 Horsepower**

650-1200W

**1.2+ Cups**



# 1800W AC Output

DELTA can charge anything in your household, ranging from your light to your power tools in your workshop. It can even charge your electric vehicle in case of emergency!

---



# Meets The Standard Of Any Wall Outlet

Always Feel Right At Home

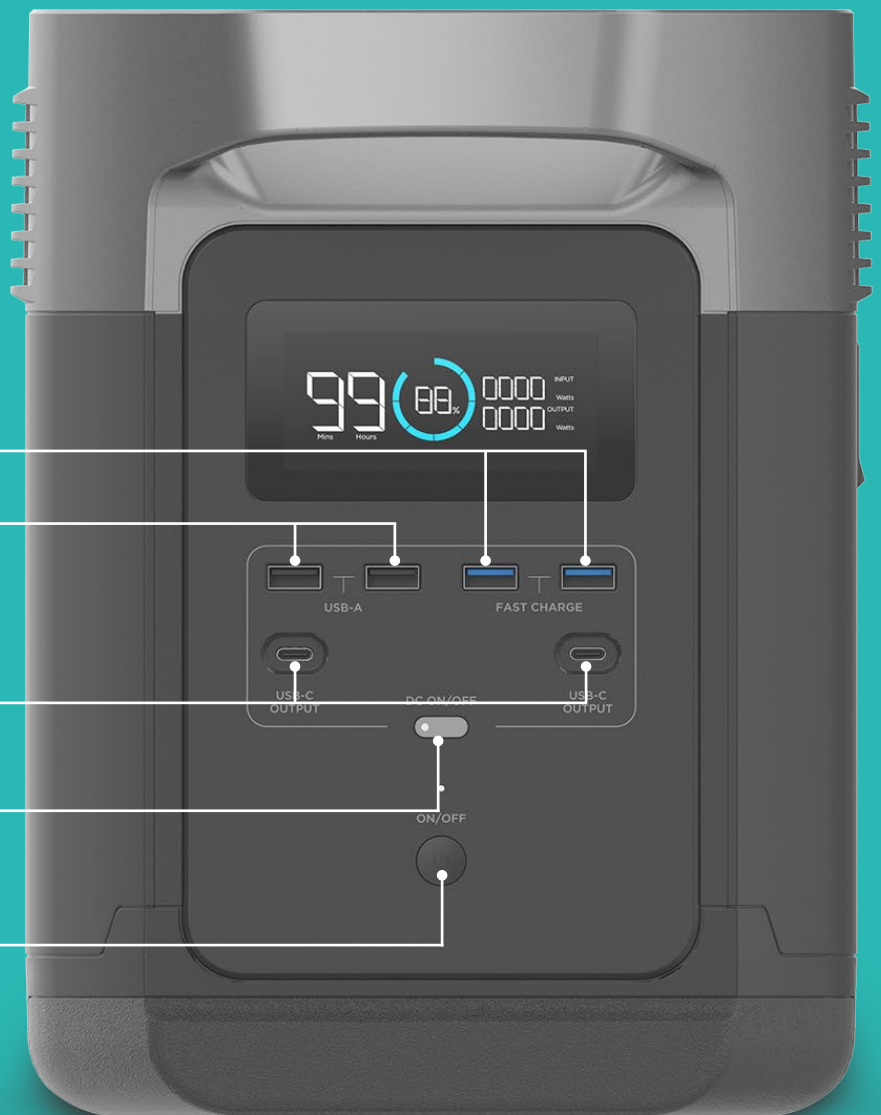
2x 28W Fast Charge

2x 12W Fast Charge

2x 60W USB-C

DC ON/OFF

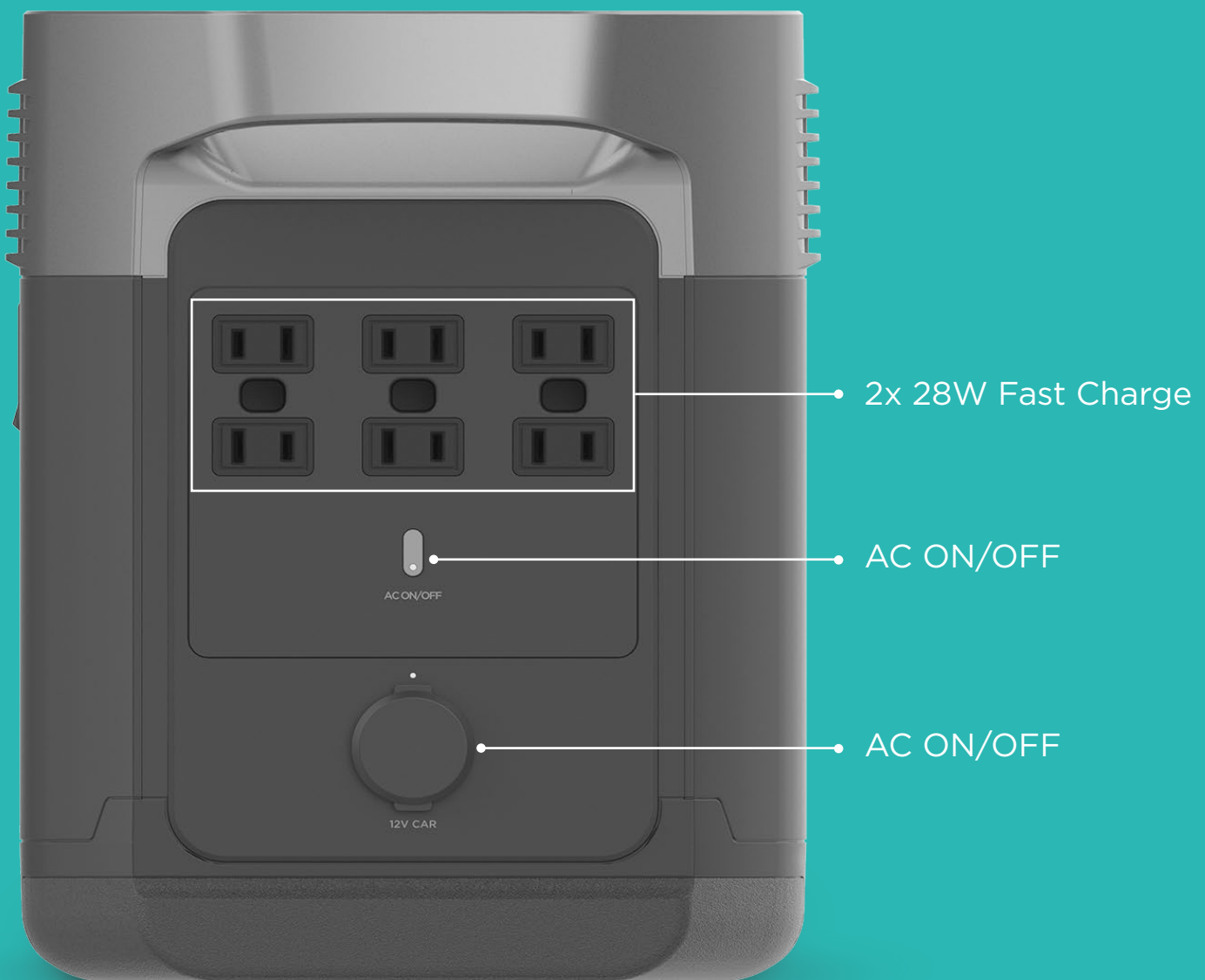
DC ON/OFF



# 13 Devices

## Powered Simultaneously

DELTA is built to give you peace of mind. Bring DELTA to any party or into your living room and power up to 13 devices simultaneously. DELTA's system includes four regular USB ports, two 60-watt USB-C ports plus four wall outlets on the International edition and six wall outlets on the American edition. DELTA meets the standard of any wall outlet so you'll always feel right at home.



# 1295Wh Capacity

With DELTA, you're prepared for any emergency. It's safe, easy to use, and gasoline-free. Run fridges, lights, medical devices, and other essentials, all with the flip of a switch.







A power outage doesn't have to spell emergency for families who rely on medical devices, such as a CPAP machine or a medical fridge. With DELTA, you're always well prepared for the unexpected.



# Compatible With Any Solar Installation

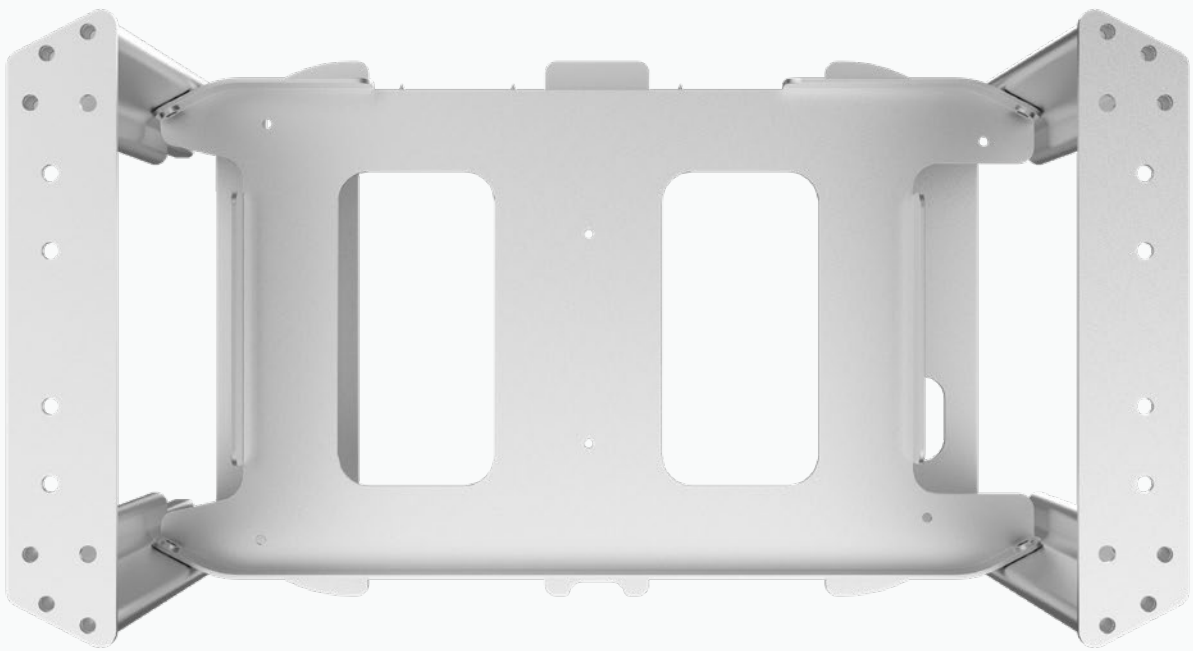
## Universal Solar Input

Harness the power of the sun by recharging DELTA with solar. Power everything you need to live life off the grid or back up your home in an emergency with a portable solar panel.

DELTA is compatible with any solar panels on the market. In perfect sunlight and 400W of solar panels, DELTA can be fully recharged in just four hours. DELTA is even able to be hooked up to an already existing solar roof installation.

# Aerospace-grade Aluminum and High-strength Steel

Rugged As Any Tool In The Shed



## Rigid structure

DELTA was strategically designed to have a low, solid center of gravity, mitigating rollover risk. In addition, it is made with aerospace-grade aluminum and high-strength steel to achieve maximum strength and durability.

# EcoFlow's Patented X-STREAM Charge Technology



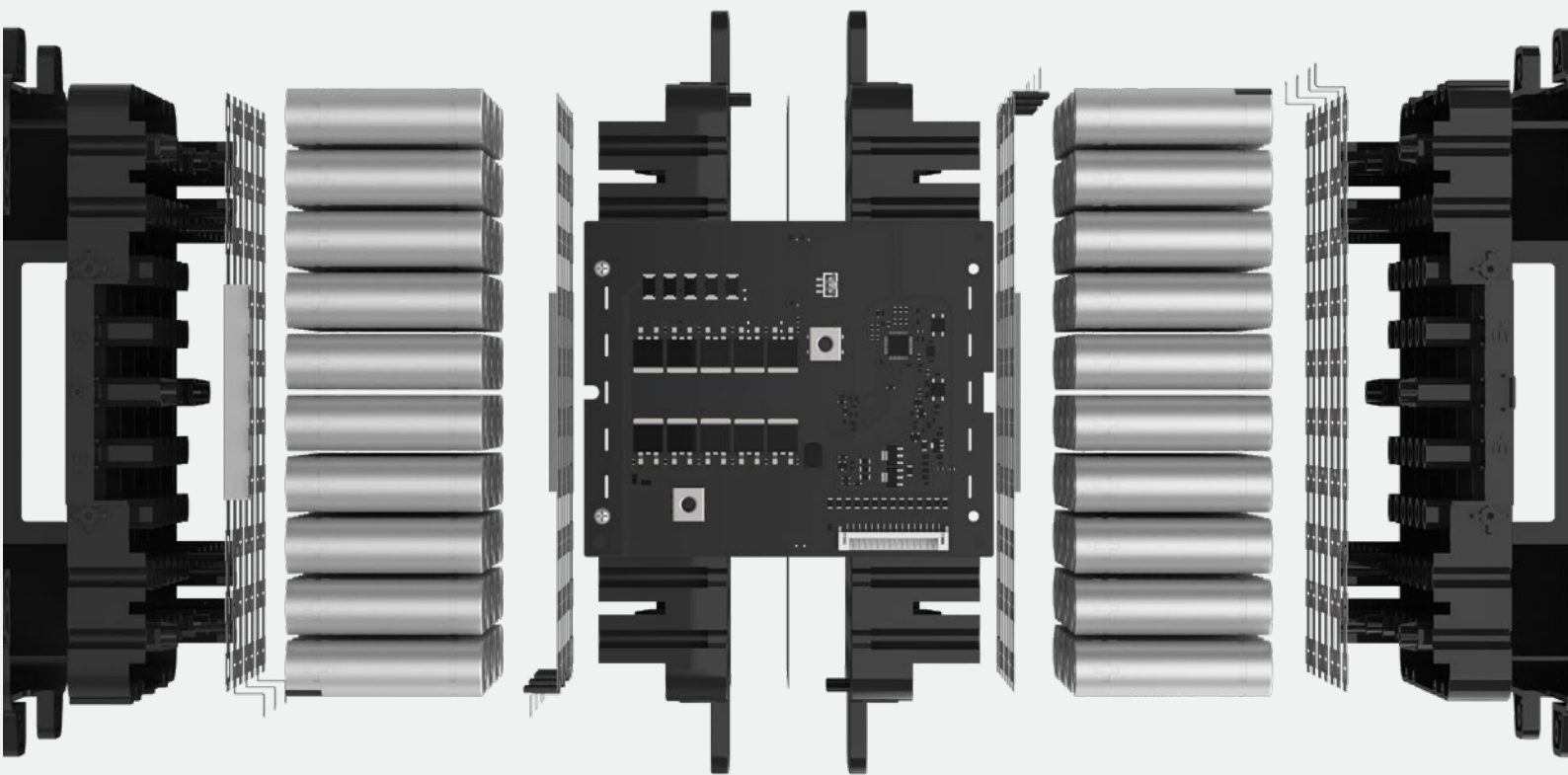
The Power Management System converts DC to AC, and AC to DC in the most efficient way, allowing you to charge DELTA fully in just two hours. It has protective measures in place, which extends the power surge up to 3300W and prevents overload.



# EcoFlow's Battery Management System



Inside DELTA, there are 140 lithium-ion battery cells. To extend the performance, life-cycle and shelf-life of DELTA, we've developed our own proprietary Battery Management System. The Battery Management System regulates all the lithium-ion batteries inside DELTA and takes care of the batteries health individually using AI algorithms.



# 2 Years

## Battery Warranty

Carefree After Sales Service

---

# DELTA Spec Sheet



## DELTA 1000

## DELTA 1300

|                            |  |  |
|----------------------------|--|--|
| Capacity                   | 1036Wh(280Ah,3.7V)   | 1295Wh (350Ah,3.7V)  |
| Dimension                  | 5.7 x 8.3 x 10.6in<br>(40 x 21 x 27cm)   | 5.7 x 8.3 x 10.6in<br>(40 x 21 x 27cm)   |
| Net Weight                 | 30.9lbs (14kg)   | 30.9lbs (14kg)   |
| Charge Temperature         | 32-113°F (0-45°C)  | 32-113°F (0-45°C)  |
| Discharge Temperature      | -4-113°F (-20-45°C)  | -4-113°F (-20-45°C)  |
| Testing and Certifications | UL CE FCC RoHS PSE   | UL CE FCC RoHS PSE   |
| Input                      | <b>AC Charge Input Power</b><br>X-STREAM Charge 1200W max                            | <b>AC Charge Input Power</b><br>X-STREAM Charge 1200W max                            |
|                            | <b>AC Charge Input Voltage</b><br>100-120Vac (50Hz/60Hz)<br>(Int'l Version 220-240V) | <b>AC Charge Input Voltage</b><br>100-120Vac (50Hz/60Hz)<br>(Int'l Version 220-240V) |
|                            | <b>Solar Charge Input</b><br>400W 10-65V 10A max                                     | <b>Solar Charge Input</b><br>400W 10-65V 10A max                                     |
|                            | <b>Car Charge Input</b><br>12V/24V 10A max   | <b>Car Charge Input</b><br>12V/24V 10A max   |

# DELTA Spec Sheet



|                |   |   |
|----------------|---|---|
| Output         | <b>AC Output (x6)</b><br><b>Full Sine Wave</b><br>1600W (Surge 3100W)<br>total, 120V( 60Hz)<br>(Int'l Version ACx4) | <b>AC Output (x6)</b><br><b>Full Sine Wave</b><br>1800W (Surge 3300W)<br>total, 120V( 60Hz)<br>(Int'l Version ACx4) |
|                | <b>USB-A Output (x2)</b><br>12W per port, 5V, 2.4A max  | <b>USB-A Output (x2)</b><br>12W per port, 5V, 2.4A max  |
|                | <b>USB-A Fast Charge (x2)</b><br>28W per port, 12V, 2.4A max  | <b>USB-A Fast Charge (x2)</b><br>28W per port, 12V, 2.4A max  |
|                | <b>USB-C Output (x2)</b><br>60W per port, 20V, 3A max   | <b>USB-C Output (x2)</b><br>60W per port, 20V, 3A max   |
|                | <b>Car Power Output (x1)</b><br>108.8W, 13.6V, 8A max   | <b>Car Power Output (x1)</b><br>108.8W, 13.6V, 8A max   |
| Cell Chemistry | Lithium-ion   | Lithium-ion   |
| Cell Type      | 18650   | 18650   |
| Shelf Life     | 1 Year (after fully charged)  | 1 Year (after fully charged)  |
| Life Span      | 800 Cycles (60%)  | 800 Cycles (60%)  |



# DELTA 1000 VS Competition

DELTA Cutting-Edge Portable Power



|                            | DELTA 1000                           | YETI 1000              | Honda 1000i              |
|----------------------------|--------------------------------------|------------------------|--------------------------|
| Type                       | Lithium-ion                          | Lithium-ion            | Gas                      |
| Charging Time              | 1.7 hours                            | 18 hours               | --                       |
| Capacity                   | 1036Wh<br>(280Ah,3.7V)               | 1045Wh                 | --                       |
| AC Output<br>(Watts)       | 1600W<br>(Surge 3100W)               | 1500W<br>(Surge 3000W) | 900W<br>(Surge 1000W)    |
| Shelf Life                 | 12 Months                            | 3-6 Months             | --                       |
| Ports                      | 6 AC outlets<br>2 USB-C PD,<br>4 USB | 2 AC outlets,<br>4 USB | 2 AC outlets             |
| Weight                     | 30 lbs                               | 40 lbs                 | 28.7 lbs<br>(dry weight) |
| Can Use Indoors            | ✓                                    | ✓                      | ✗                        |
| No Bulky Adapter           | ✓                                    | ✗                      | ✓                        |
| Clean, Quite&<br>Fume-free | ✓                                    | ✓                      | ✗                        |
| Annual<br>Maintenance Cost | \$0                                  | \$0                    | \$100-\$150              |
| Price                      | <b>\$1099</b>                        | <b>\$1,099</b>         | <b>\$959</b>             |

# DELTA 1300 VS Competition

DELTA Cutting-Edge Portable Power



|                            | DELTA 1300                           | YETI 1400                             | Honda 2200i            |
|----------------------------|--------------------------------------|---------------------------------------|------------------------|
| Type                       | Lithium-ion                          | Lithium-ion                           | Gas                    |
| Charging Time              | 1.7 hours                            | 25 hours                              | --                     |
| Capacity                   | 1295Wh<br>(350Ah,3.7V)               | 1425Wh                                | --                     |
| AC Output<br>(Watts)       | 1800W<br>(Surge 3300W)               | 1500W<br>(Surge 3000W)                | 1800W<br>(Surge 2200W) |
| Shelf Life                 | 12 Months                            | 3-6 Months                            | --                     |
| Ports                      | 6 AC outlets<br>2 USB-C PD,<br>4 USB | 2 AC outlets,<br>2 USB-C PD,<br>2 USB | 2 AC outlets           |
| Weight                     | 30 lbs                               | 43 lbs                                | 47 lbs<br>(dry weight) |
| Can Use Indoors            | ✓                                    | ✓                                     | ✗                      |
| No Bulky Adapter           | ✓                                    | ✗                                     | ✓                      |
| Clean, Quite&<br>Fume-free | ✓                                    | ✓                                     | ✗                      |
| Annual<br>Maintenance Cost | \$0                                  | \$0                                   | \$100-\$150            |
| Price                      | <b>\$1399</b>                        | <b>\$1,799</b>                        | <b>\$1,159</b>         |

# 110W Solar Panel Comparison

|                       | EcoFlow 110W                    | Goal Zero 100W                     |
|-----------------------|---------------------------------|------------------------------------|
| Rated Power           | 110W                            | 100W                               |
| Actual Measured Power | 75-80W                          | 45-50W                             |
| Cell Type             | Monocrystalline                 | Monocrystalline                    |
| Dimensions (Unfolded) | 20.5X62.2X0.8 in<br>52X158X2 cm | 20.5X59.5X1 in<br>52X151.1X2.54 cm |
| Dimensions (Folded)   | 20.5X17X0.8 in<br>52X43X2 cm    | 20.5X15.4X1 in<br>52X39X2.54 cm    |
| Weight                | 3.5kg                           | 4.8kg                              |
| Solar Port            | MC4                             | MC4/DC                             |
| IP Level              | IP67                            | IP54                               |
| With Kickstand        | ✓                               | ✗                                  |
| Price                 | <b>\$399</b>                    | <b>\$499</b>                       |



DELTA  
PORTABLE BATTERY GENERATOR